



HILLY CROFT GARDENS GILDERSOME LANE

LS27 7BL

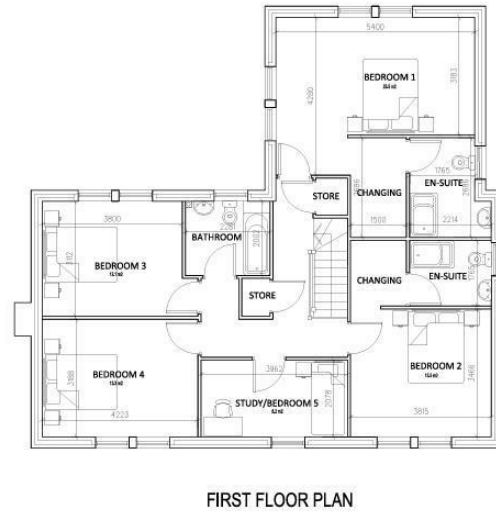
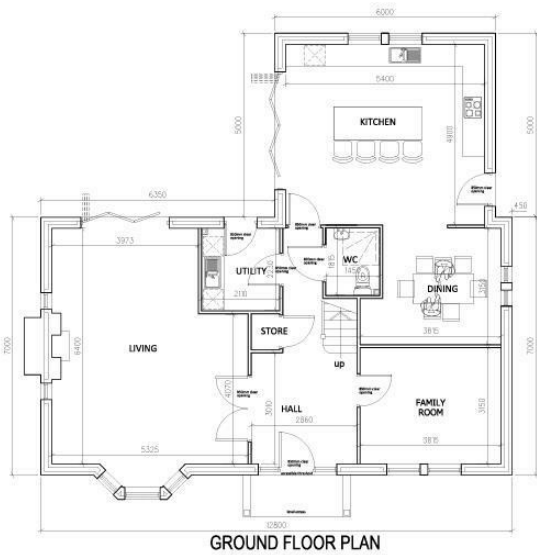
£995,000
FREEHOLD

Welcome to Hilly Croft Gardens - this new development comprises of 3 high specification detached homes, in Gildersome, Leeds. With optional extras and selections available for bespoke luxury, this opportunity is one not to be missed!

Reserved off-market. Now just 2 homes remaining

MONROE

SELLERS OF THE FINEST HOMES



Note:
All Plots are to meet the requirements of M4(2)
'accessible and adapted dwellings'
of Part M Volume 1 of the Building Regulations.



Gross Internal Floor Area = 211m² (2270 sq.ft)

Hillycroft Gildersome Lane LS27 7BL

HOUSE PLANS

PLOTS 2 & 3 (handed)

SCALE 1:50 @ A1 1:100 @ A3

Agents Note: Whilst every care has been taken to prepare these particulars, they are for guidance purposes only. All measurements are approximate and are for general guidance purposes only and whilst every care has been taken to ensure their accuracy, they should not be relied upon and potential buyers/tenants are advised to recheck the measurements

Land & New Homes
1-3 The Avenue
Alwoodley
Leeds
West Yorkshire
LS17 7BD

0113 350 1444
landandnewhomes@monroestateagents.com
www.monroestateagents.com

MONROE

SELLERS OF THE FINEST HOMES